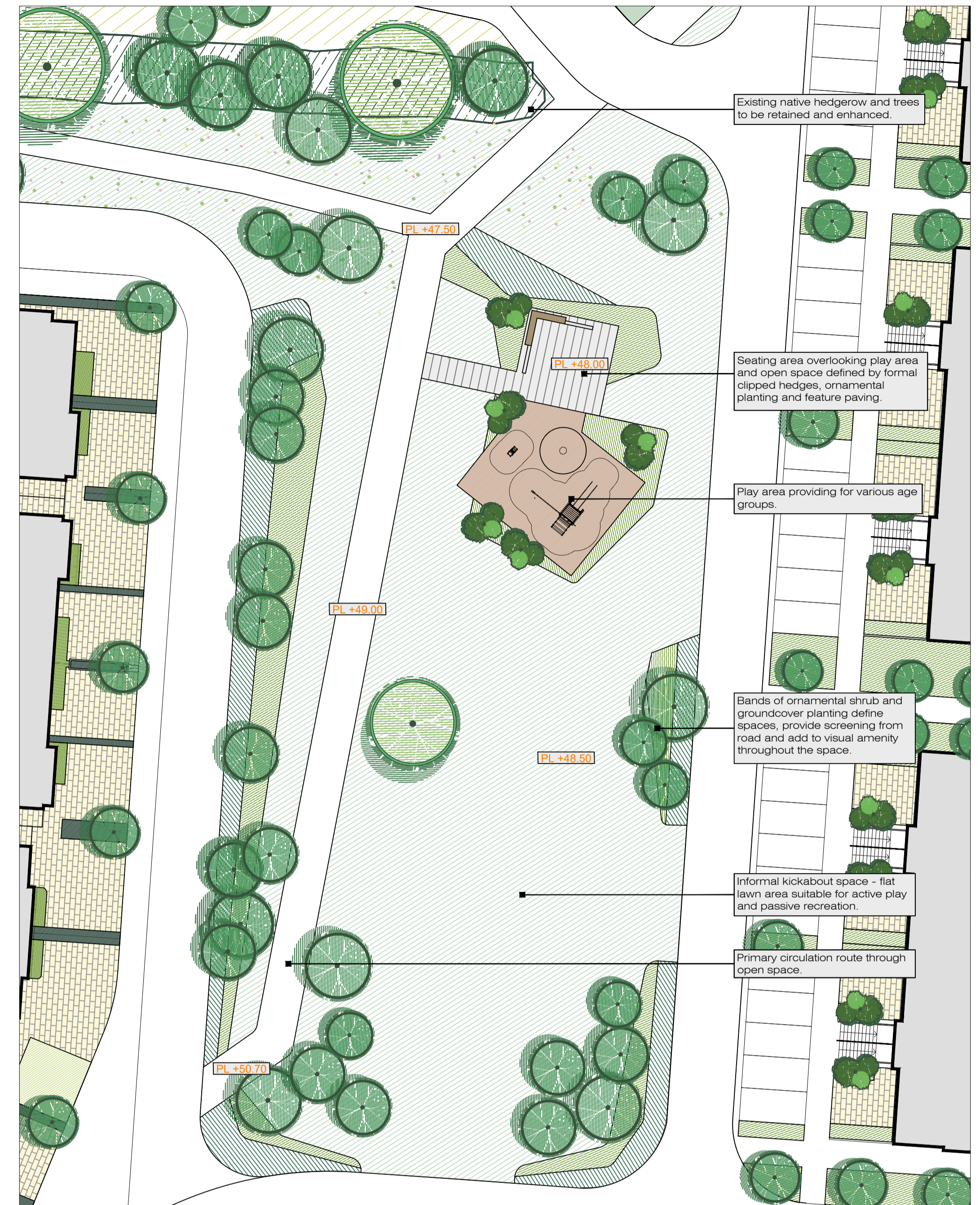




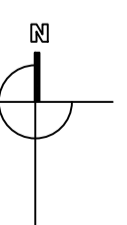
Open Space 2 | 1:250



Open Space 3 | 1:250

Legend and Planting List:

- Existing Tree:** To be protected, retained and incorporated into landscape scheme.
- Large Tree Planting:** To be planted as 14-16cm, 3xtr, w/b, 4-4.5m high, 2m clear stem. To be of the following species: *Aesculus hippocastanum* (Horse Chestnut), *Fagus sylvatica* (Beech), *Quercus robur* (Oak), *Tilia platyphyllos* (Lime).
- Medium Sized Street Tree Planting:** To be planted as 10-12cm girth specimens with underground guying support. To be selected from following: *Malus trilobata* (Field Maple), *Prunus avium* (Wild Cherry), *Prunus chandlessii* (Ornamental Pear), *Prunus lazarus* (Ornamental Cherry), *Sorbus intermedia* 'Brouwers' (Ania Section).
- Ornamental/Multi-stemmed Tree Planting:** To be planted as 14-16cm, 3xtr, w/b, 4-4.5m high, 2m clear stem. To be of the following species: *Aesculus hippocastanum* (Horse Chestnut), *Fagus sylvatica* (Beech), *Quercus robur* (Oak), *Tilia platyphyllos* (Lime).
- Existing Native Hedgerow Planting:** To be retained and enhanced with reference to arborist's report.
- Proposed Native Woodland Planting Mix:** To be planted as 20% 9-10cm half standards and 80% transplants. To be selected from following: *Crataegus monogyna*, *Prunus spinosa* (Blackthorn), *Ilex aquifolium* (Holly), *Corylus avellana* (Hazel).
- Formal Hedge Planting:** To be selected from following: *Carpinus betulus*, *Cotoneaster lacteus*, *Fagus sylvatica*, *Prunus lusitanica*.
- Groundcover and Grass Planting:** To be selected from following: Groundcovers planted at 5 per m² in single species groups. Herbaceous plants to be planted throughout in groups of 3 and 5. Bulbs to be planted throughout in groups of 7 and 9. To be selected from following: *Abelia x grandiflora*, *Buxus sempervirens* (Box), *Cistus x hybridus* (Rock Rose), *Cornus alba* 'Sibirica' (Red Barked Dogwood), *Callamagrostis 'Karl Foerster'*, *Hypericum 'Wildcat'* (St John's Wort), *Ilex aquifolium* (Holly), *Ligustrum japonicum* (Japanese Privet), *Ligustrum vulgare* (Common Privet), *Mahonia x media*, *Prunus lusitanica* (Portuguese Laurel), *Prunus laurocerasus* (Common Laurel), *Salix britzensis* (Willow), *Stipa gigantea*.
- Groundcover + Grasses:** *Carex testacea*, *Hedera helix* 'Hibernica' (Ivy), *Lavandula stoechas* (Lavender), *Liberia formosa*, *Lonicera pileata* (Honeysuckle), *Lonicera nitida* 'Maigreen' (Honeysuckle), *Luzula nivea* (Snowy Woodrush), *Molinia caerulea* (Purple Moor Grass), *Panicum affinis* 'Superba', *Stipa calamagrostis*, *Stipa tenuissima*, *Vinca minor* (Periwinkle).
- Herbaceous Plants:** *Allium* spp., *Anemone japonica* 'Honore Jobert' (Windflower), *Crococissia 'Ludifer'*, *Ligularia 'Przewalskii'*, *Rudbeckia fulgida* 'Goldsturm' (Black Eyed Susan).
- Bulb Planting:** *Narcissus* spp., *Crocus* spp.
- Grass Seeding:** Managed as an ornamental lawn.
- Private Residential Gardens:** To be grass seeded.
- Bulb Planting:** Small unit concrete pavers or flags.
- Paving to gardens and access paths:** Small unit concrete pavers or flags.
- Feature Paving to public spaces:** Small unit concrete pavers or flags.
- In-situ Concrete Footpaths:** Small unit concrete pavers or flags.
- Soft Play Surface:** To all childrens play areas.
- Timber Benches:**
- Informal Play Equipment:**
- Formal Play Equipment:**



REV	DATE	BY	DESCRIPTION

THIS DRAWING IS COPYRIGHT ©	
DO NOT SCALE	figured dimensions only to be taken from this drawing

Farrankelly, Greystones, Co. Wicklow for Cairn Homes Properties Ltd.		Scale: 1:250 @ A1	Sheet: PLANNING
Open Space 2 and Open Space 3		Date: 02.09.19	Dim: MM Ctd: SK Passed
285		Job No: 103	
7 Abbey Business Park Grange Drive Dublin 13 T: 00353 (0) 1 8326715 E: info@kfa.ie W: www.kfa.ie			